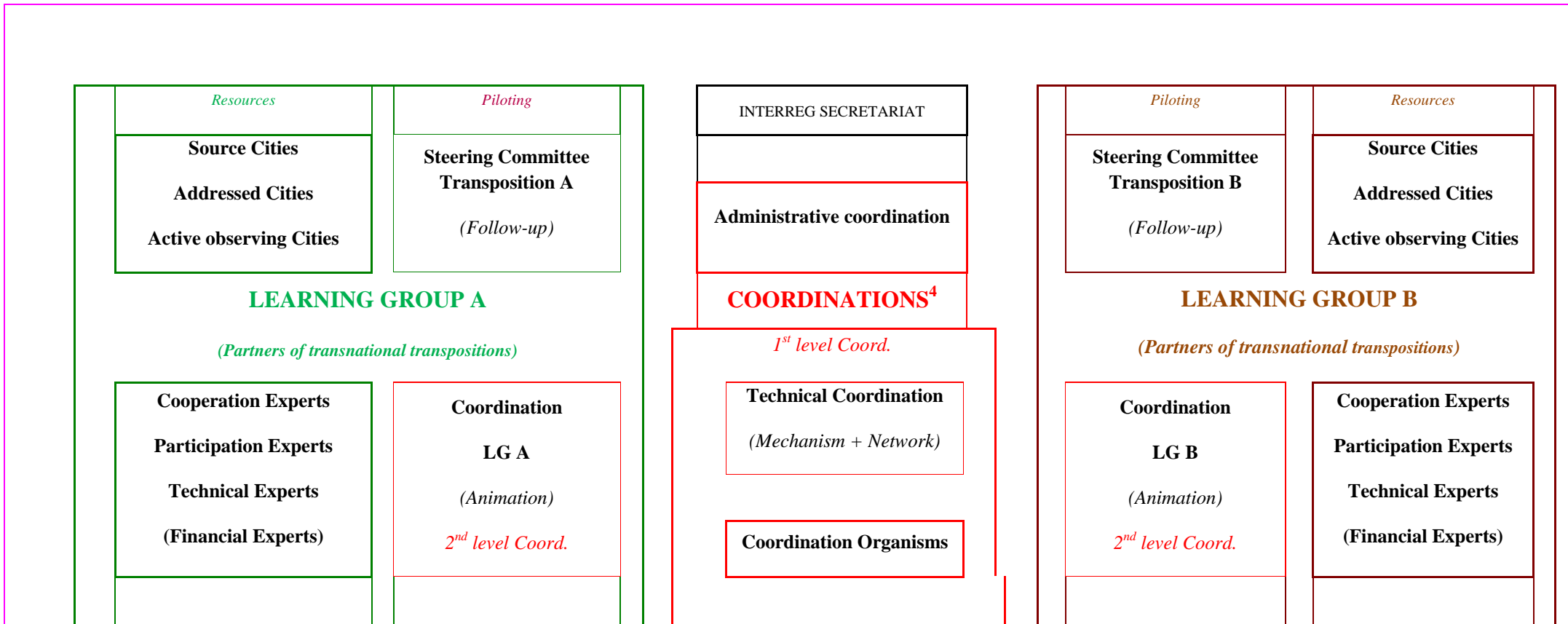


*A multifunctional organization*³

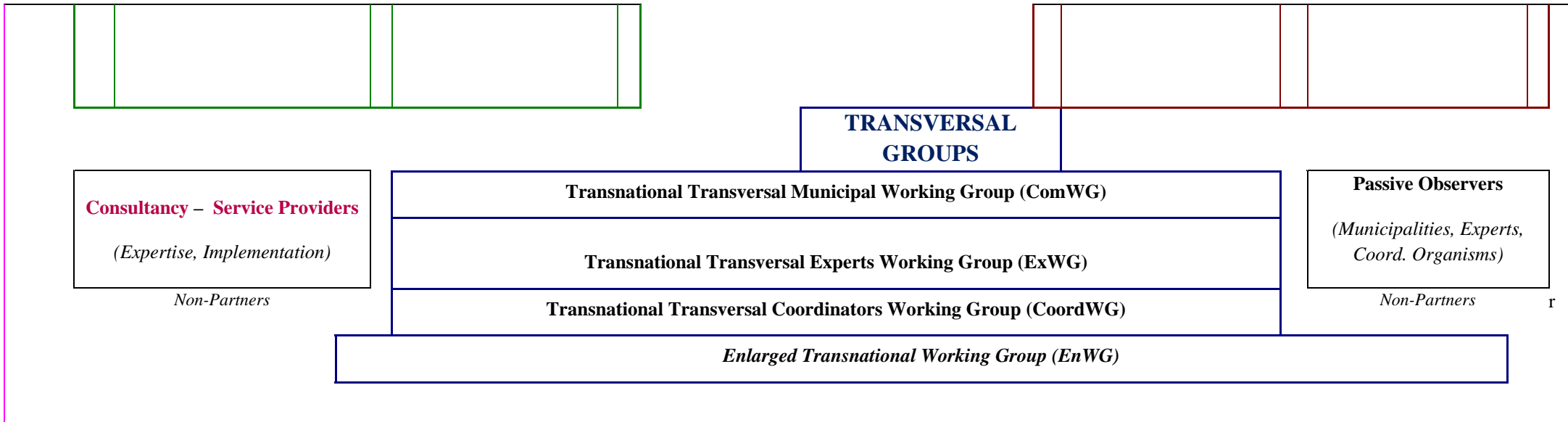
Resources: surrounded with discontinuous lines

Functional centres: surrounded with continuous line(s)



³ Indicative diagram for two transposition Learning Groups (LG). The choice of the number of LG's will actually depend on several criteria related to the coordination and composition of each of them (geographical distribution, concerned domains, expected results, type of support requested, etc.).

⁴ *A third level of coordination lies within the partner organizations.* It is in charge of the project management at local level.



The distribution of the different roles (functions) will be based on the identified capacities, and in the prospect of a pertinent recovery of the steering expertise in the long term.